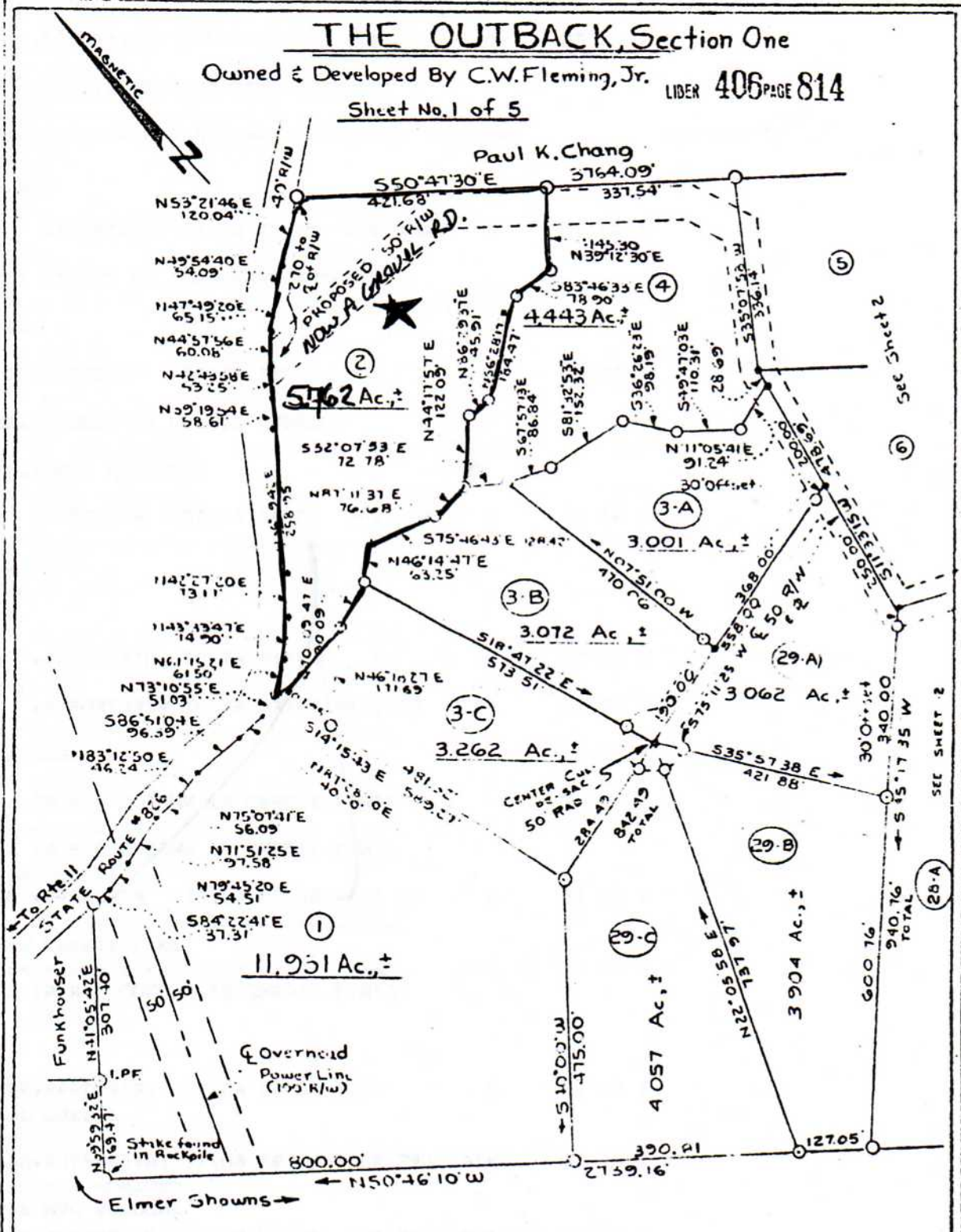


THE OUTBACK, Section One

Owned & Developed By C.W. Fleming, Jr. LIBER 406 PAGE 814

Sheet No. 1 of 5



LOCATION: About 3 miles East of Route 11 and the Cedar Grove Church and being in the Lee Magisterial District, Shenandoah County, Va.

SCALE: 1"=200'

LEGEND: ○: iron pipes, ●: points, ⊕: centerline

DEED BOOK REFERENCE: D.B. 385, P. 159 & D.B. 385, P. 137.

SURVEYED BY: H.J. Morris
C.L.S. No. 1075

